

Workshop Manual

Wiring Diagrams

C
2(0)

Electrical System Wiring Diagrams

Suppliment to Workshop Manual 7743244

All Models

Table of Contents

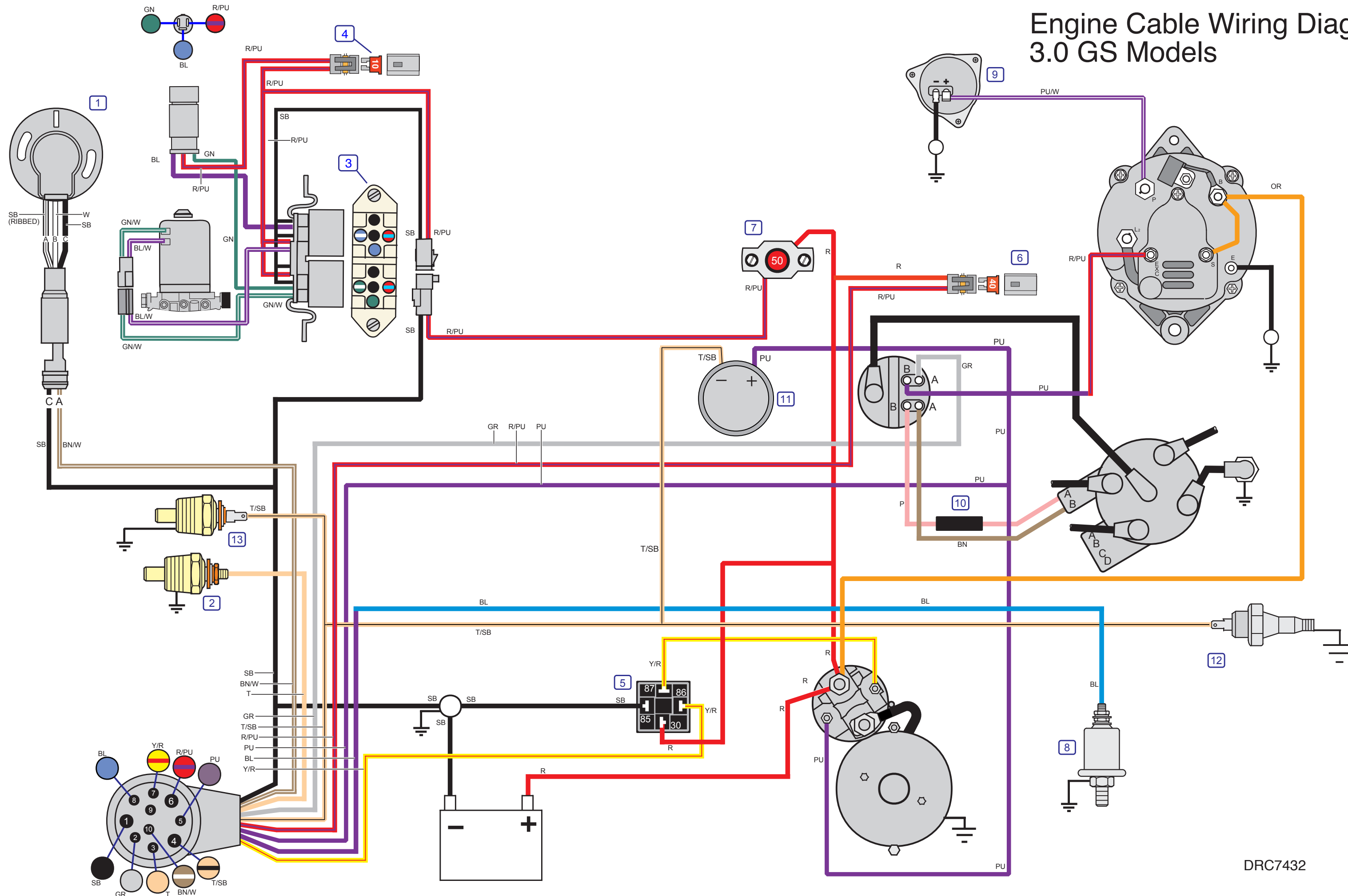
3.0 GS Models	8-2
4.3 GL Models	8-4
5.0 GL and 5.7 GS Models	8-6
4.3 Gi Models	8-8
5.0 Gi and 5.7 GSi Models	8-10
7.4 Gi Models	8-12
7.4 GSi and 8.2 GSi Models	8-14

Engine Cable Wiring Diagram

3.0 GS Model

- ① Trim Sender
- ② Water Temperature Sender, Gauge
- ③ Relays, Trim Motor
- ④ 10 Amp Fuse, Trim/Tilt
- ⑤ Relay, Starter
- ⑥ 40 Amp Fuse Instrument Harness
- ⑦ 50 Amp Circuit Breaker, Trim/Tilt
- ⑧ Oil Pressure Sender, Gauge
- ⑨ Electric Choke, Carburetor
- ⑩ Inductor
- ⑪ Alarm
- ⑫ Oil Pressure Alarm Switch
- ⑬ Water Temperature Alarm Switch

Engine Cable Wiring Diagram 3.0 GS Models



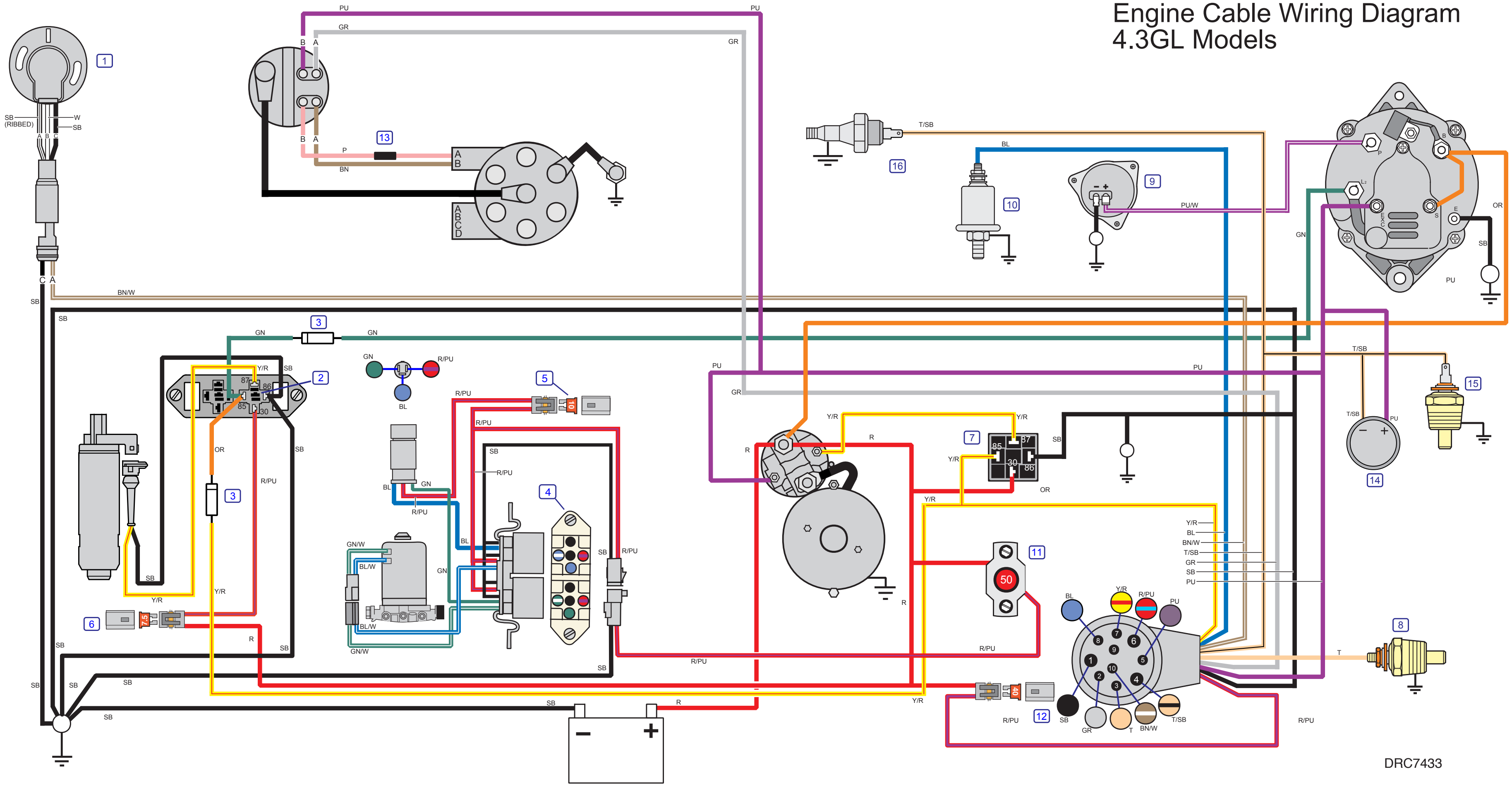
- Cable colors
 BN = Brown
 BL = Blue
 GN = Green
 GR = Grey
 LBL = Light blue
 LBN = Light brown
 OR = Orange
 P = Pink
 PU = Purple
 R = Red
 SB = Black
 VO = Violet
 W = White

Engine Cable Wiring Diagram 4.3 GL Model

- ① Trim Sender
- ② Relay, Fuel Pump
- ③ Diode
- ④ Relays, Trim Motor
- ⑤ 10 Amp Fuse, Trim/Tilt
- ⑥ 7.5 Amp Fuse, Fuel Pump
- ⑦ Starter Relay
- ⑧ Water Temperature Sender, Gauge
- ⑨ Electric Choke, Carburetor
- ⑩ Oil Pressure Sender, Gauge
- ⑪ 50 Amp Circuit Breaker, Trim/Tilt
- ⑫ 40 Amp Fuse, Instrument Harness
- ⑬ Inductor
- ⑭ Alarm
- ⑮ Water Temperature Switch, Alarm
- ⑯ Oil Pressure Switch, Alarm

Engine Cable Wiring Diagram 4.3GL Models

- Cable colors
 BN = Brown
 BL = Blue
 GN = Green
 OR = Grey
 LBL = Light blue
 LBN = Light brown
 OR = Orange
 P = Pink
 PU = Purple
 R = Red
 SB = Black
 VO = Violet
 W = White



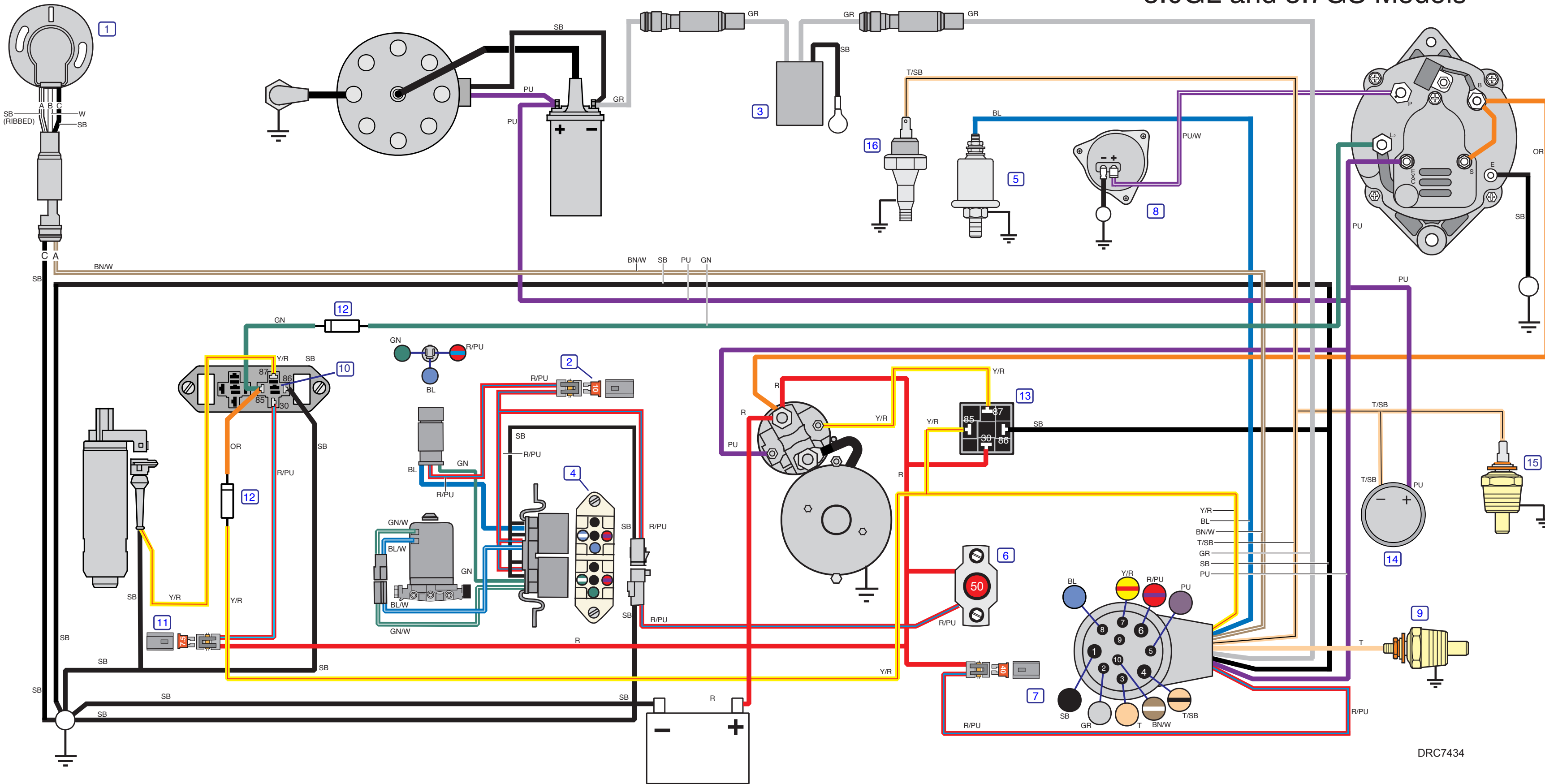
Engine Cable Wiring Diagram 5.0 GL and 5.7 GS Models

- ① Trim Sender
- ② 10 Amp Fuse, Trim/Tilt
- ③ Tachometer Amplifier*
- ④ Relays, Trim Motor
- ⑤ Oil Pressure Sender, Gauge
- ⑥ Circuit Breaker, Trim/Tilt
- ⑦ 40 Amp Fuse, Instrument Harness
- ⑧ Electric Choke, Carburetor
- ⑨ Water Temperature Sender, Gauge
- ⑩ Relay, Fuel Pump
- ⑪ 7.5 Amp Fuse, Fuel Pump
- ⑫ Diode
- ⑬ Relay, Starter
- ⑭ Alarm
- ⑮ Water Temperature Switch, Alarm
- ⑯ Oil Pressure Switch, Alarm

*Optional Equipment

Engine Cable Wiring Diagram 5.0GL and 5.7GS Models

- Cable colors
 BN = Brown
 BL = Blue
 GN = Green
 GR = Grey
 LBL = Light blue
 LBN = Light brown
 OR = Orange
 P = Pink
 PU = Purple
 R = Red
 SB = Black
 VO = Violet
 W = White



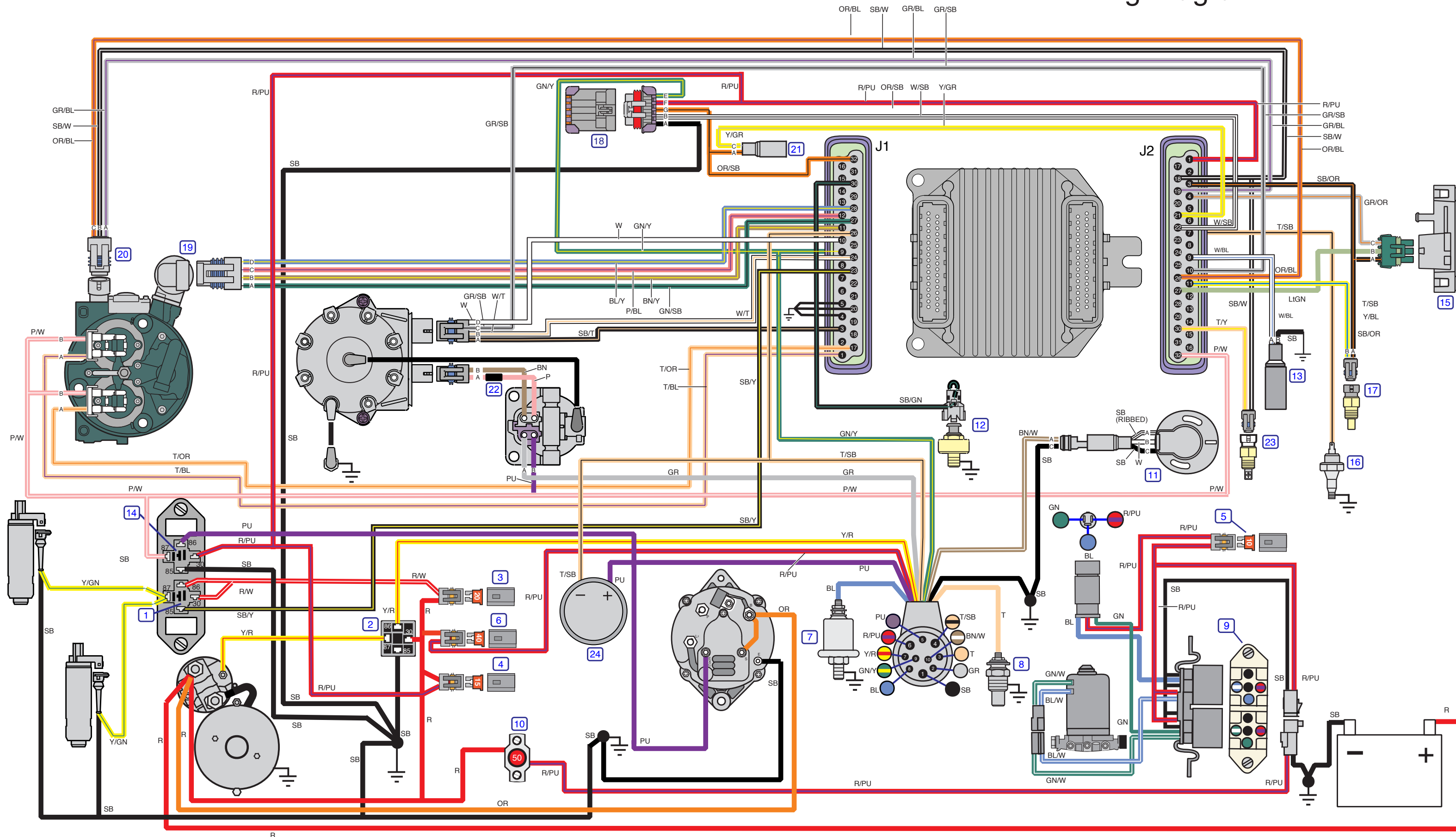
DRC7434

Engine Cable Wiring Diagram 4.3 Gi Model

- ① Relay, Fuel Pumps
- ② Relay, Starter
- ③ 20 Amp Fuse, Fuel Pumps
- ④ 15 Amp Fuse, Ignition/Fuel
- ⑤ 10 Amp Fuse, Trim/Tilt
- ⑥ 40 Amp Fuse, Instrument Harness
- ⑦ Oil Pressure Sender, Gauge
- ⑧ Water Temperature Sender, Gauge
- ⑨ Relays, Trim Motor
- ⑩ 50 Amp Circuit Breaker, Trim/Tilt
- ⑪ Trim Sender
- ⑫ Knock Sensor
- ⑬ Shift Interrupt Connector
- ⑭ Relay, Ignition/Fuel
- ⑮ Manifold Absolute Pressure (MAP) Sensor
- ⑯ Oil Pressure Switch, S.L.O.W.
- ⑰ Engine Coolant Temperature (ECT) Sensor
- ⑱ Diagnostic Link Connector (DLC)
- ⑲ Idle Air Control (IAC) Motor
- ⑳ Throttle Position (TP) Sensor
- ㉑ Master/Slave Connector
- ㉒ Inductor
- ㉓ Manifold Air Temperature (MAT) Sensor
- ㉔ Alarm

4.3Gi Engine Cable Wiring Diagram

- Cable colors
 BN = Brown
 BL = Blue
 GN = Green
 GR = Grey
 LBL = Light blue
 LBN = Light brown
 OR = Orange
 P = Pink
 PU = Purple
 R = Red
 SB = Black
 VO = Violet
 W = White



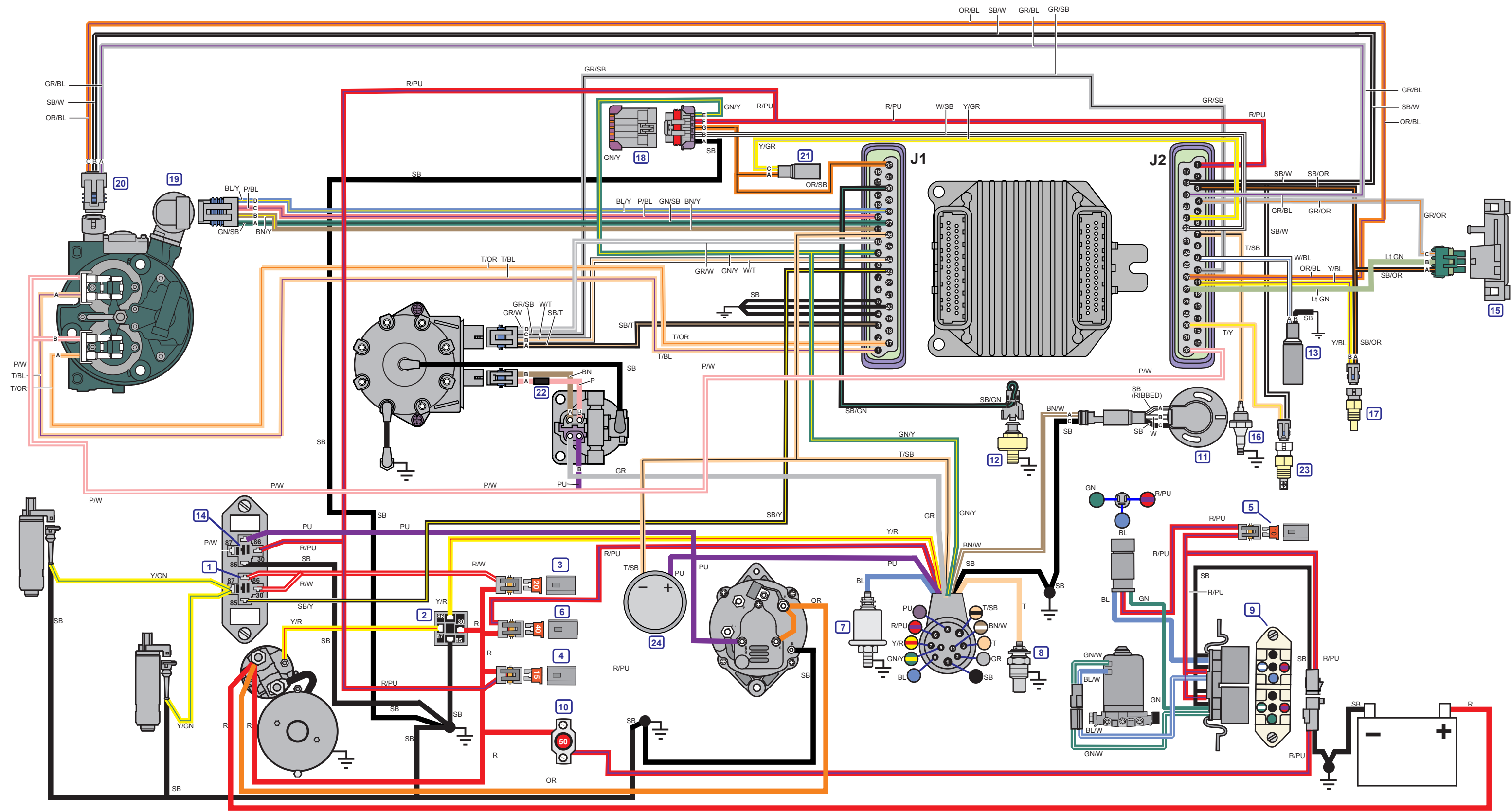
Engine Cable Wiring Diagram

5.0 Gi and 5.7 GSi Models

- ① Relay, Fuel Pumps
- ② Relay, Starter
- ③ 20 Amp Fuse, Fuel Pumps
- ④ 15 Amp Fuse, Ignition/Fuel
- ⑤ 10 Amp Fuse, Trim/Tilt
- ⑥ 40 Amp Fuse, Instrument Harness
- ⑦ Oil Pressure Sender, Gauge
- ⑧ Water Temperature Sender, Gauge
- ⑨ Relays, Trim Motor
- ⑩ 50 Amp Circuit Breaker, Trim/Tilt
- ⑪ Trim Sender
- ⑫ Knock Sensor
- ⑬ Shift Interrupt Connector
- ⑭ Relay, Ignition/Fuel
- ⑮ Manifold Absolute Pressure (MAP) Sensor
- ⑯ Oil Pressure Switch, *S.L.O.W.*
- ⑰ Engine Coolant Temperature (ECT) Sensor
- ⑱ Diagnostic Link Connector (DLC)
- ⑲ Idle Air Control (IAC) Motor
- ⑳ Throttle Position (TP) Sensor
- ㉑ Master/Slave Connector
- ㉒ Inductor
- ㉓ Manifold Air Temperature (MAT) Sensor
- ㉔ Alarm

Engine Cable Wiring Diagram 5.0 Gi and 5.7 GSi Models

- Cable colors
 BN = Brown
 BL = Blue
 GN = Green
 GR = Grey
 LBL = Light blue
 LBN = Light brown
 OR = Orange
 P = Pink
 PU = Purple
 R = Red
 SB = Black
 VO = Violet
 W = White

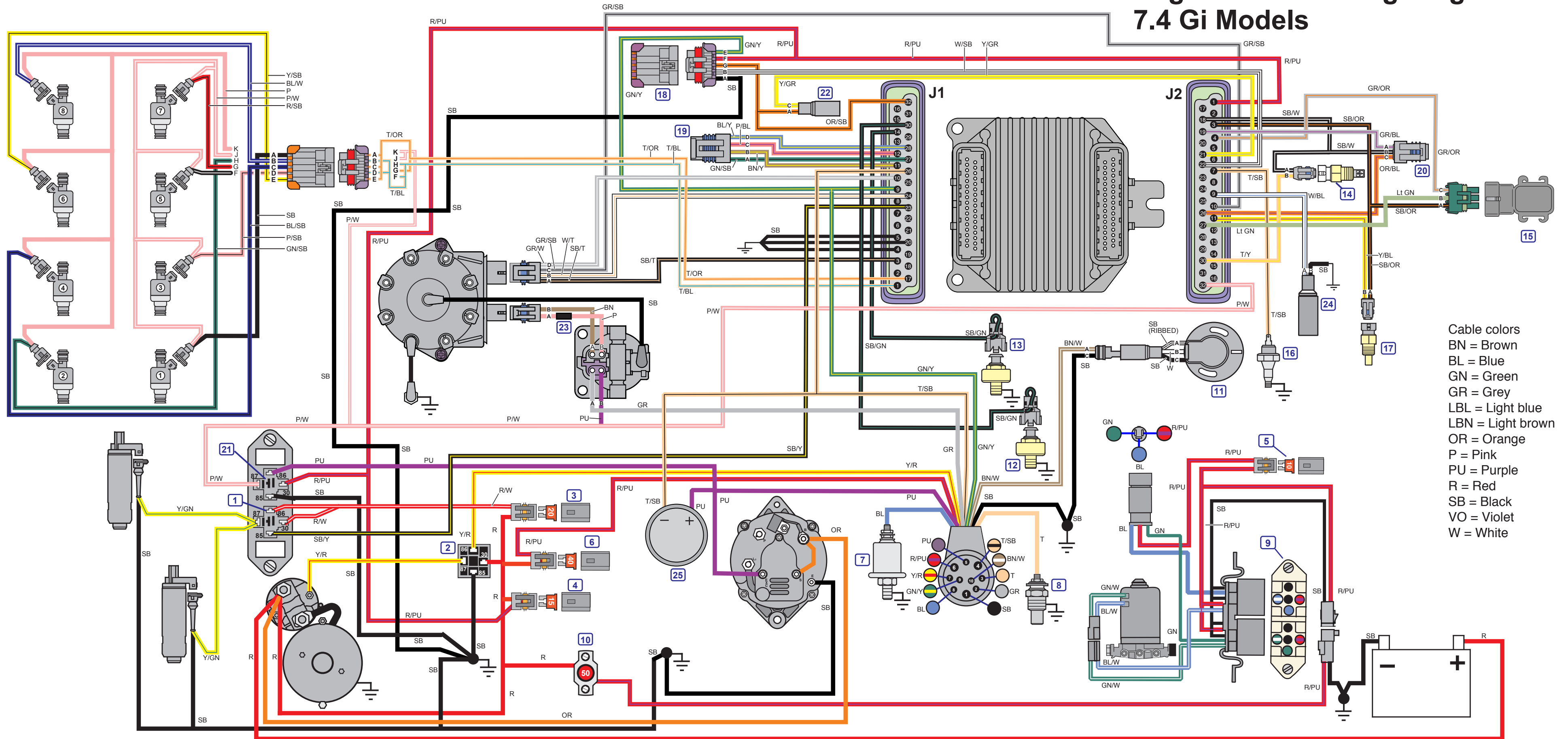


Engine Cable Wiring Diagram

7.4 Gi Models

- ① Relay, Fuel Pumps
- ② Relay, Starter
- ③ 20 Amp Fuse, Fuel Pumps
- ④ 15 Amp Fuse, Ignition/Fuel
- ⑤ 10 Amp Fuse, Trim/Tilt
- ⑥ 40 Amp Fuse, Instrument Harness
- ⑦ Oil Pressure Sender, Gauge
- ⑧ Water Temperature Sender, Gauge
- ⑨ Relays, Trim Motor
- ⑩ 50 Amp Circuit Breaker, Trim/Tilt
- ⑪ Trim Sender
- ⑫ Knock Sensor #1
- ⑬ Knock Sensor #2
- ⑭ Intake Air Temperature (IAT) Sensor
- ⑮ Manifold Absolute Pressure (MAP) Sensor
- ⑯ Oil Pressure Switch, *S.L.O.W.*
- ⑰ Engine Coolant Temperature (ECT) Sensor
- ⑱ Diagnostic Link Connector (DLC)
- ⑲ Idle Air Control (IAC) Motor
- ⑳ Throttle Position (TP) Sensor
- ㉑ Relay, Ignition/Fuel
- ㉒ Master/Slave Connector
- ㉓ Inductor
- ㉔ Shift Interrupt Connector
- ㉕ Alarm

Engine Cable Wiring Diagram 7.4 Gi Models



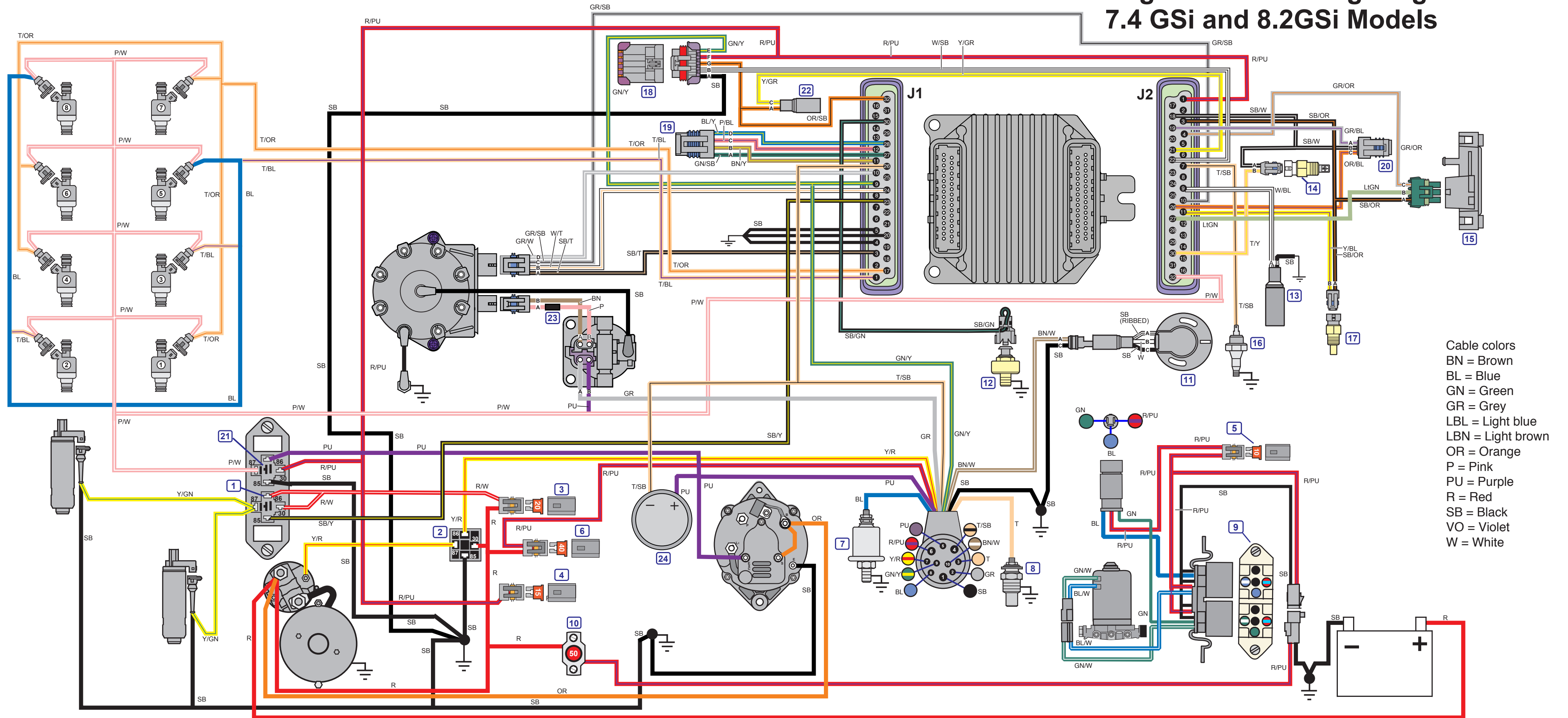
Cable colors
 BN = Brown
 BL = Blue
 GN = Green
 GR = Grey
 LBL = Light blue
 LBN = Light brown
 OR = Orange
 P = Pink
 PU = Purple
 R = Red
 SB = Black
 VO = Violet
 W = White

Engine Cable Wiring Diagram

7.4 GSi and 8.2 GSi Models

- ① Relay, Fuel Pumps
- ② Relay, Starter
- ③ 20 Amp Fuse, Fuel Pumps
- ④ 15 Amp Fuse, Ignition/Fuel
- ⑤ 10 Amp Fuse, Trim/Tilt
- ⑥ 40 Amp Fuse, Instrument Harness
- ⑦ Oil Pressure Sender, Gauge
- ⑧ Water Temperature Sender, Gauge
- ⑨ Relays, Trim Motor
- ⑩ 50 Amp Circuit Breaker, Trim/Tilt
- ⑪ Trim Sender
- ⑫ Knock Sensor
- ⑬ Shift Interrupt Connector
- ⑭ Intake Air Temperature (IAT) Sensor
- ⑮ Manifold Absolute Pressure (MAP) Sensor
- ⑯ Oil Pressure Switch, *S.L.O.W.*
- ⑰ Engine Coolant Temperature (ECT) Sensor
- ⑱ Diagnostic Link Connector (DLC)
- ⑲ Idle Air Control (IAC) Motor
- ⑳ Throttle Position (TP) Sensor
- ㉑ Relay, Ignition/Fuel
- ㉒ Master/Slave Connector
- ㉓ Inductor
- ㉔ Alarm

Engine Cable Wiring Diagram 7.4 GSi and 8.2GSi Models



- Cable colors
 BN = Brown
 BL = Blue
 GN = Green
 GR = Grey
 LBL = Light blue
 LBN = Light brown
 OR = Orange
 P = Pink
 PU = Purple
 R = Red
 SB = Black
 VO = Violet
 W = White

